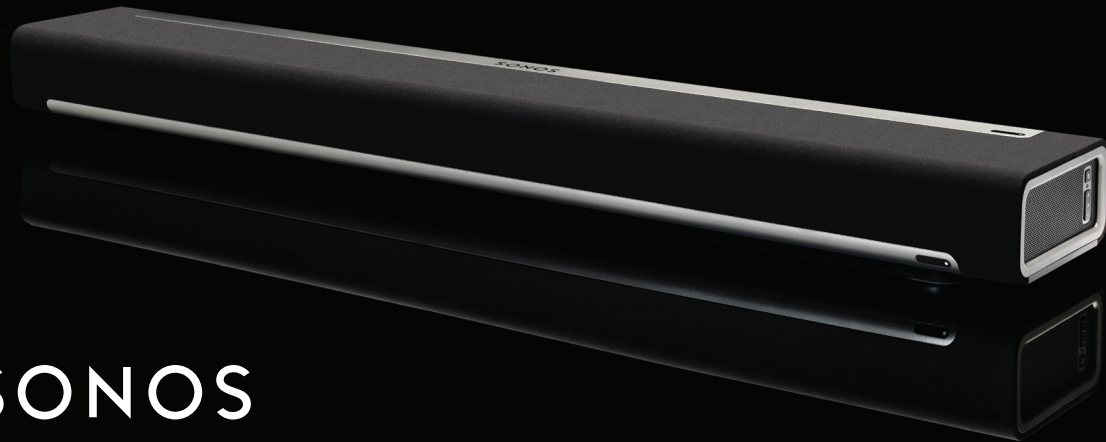


PLAYBAR

THE SOUNDBAR THAT STREAMS
ALL THE MUSIC ON EARTH



SONOS

PLAYBAR BENEFITS

FLOOD ANY ROOM WITH EPIC, FULL-THEATRE HiFi SOUND AND WIRELESSLY STREAM ALL THE MUSIC ON EARTH THROUGH ONE EASY-TO-USE PLAYER.

SONOS HiFi SOUND FOR YOUR TELEVISION.

The nine-speaker design of SONOS PLAYBAR™ floods any room with super-realistic audio for games and movies.

STREAM ALL THE MUSIC ON EARTH.

PLAYBAR doubles as a stand-alone, all-in-one SONOS player that allows you to stream all the music on earth—your iTunes library, your favourite music services, and thousands of Internet radio stations, shows, and podcasts.

EASY SETUP.

PLAYBAR connects to your TV using a single optical cable and plays everything that's connected to the TV, including cable boxes and game consoles.

WIRELESS.

No rewiring. Connect PLAYBAR or BRIDGE to your wireless router and link all your SONOS players wirelessly with one touch.

FLEXIBLE DESIGN.

PLAYBAR can sit flat on your TV table or console. If your TV is wall-mounted, PLAYBAR may be placed horizontally above or below the TV.

UNIVERSAL AUDIO.

PLAYBAR speaks Dolby® Digital and stereo, so you never miss a moment of the action.



PLAYBAR SPECS

AUDIO

AMPLIFIER NINE Class-D digital amplifiers perfectly tuned to match the speakers and acoustic architecture.

SPEAKERS Not louder. Clearer. With nine amplified speakers—six midrange and three tweeters—PLAYBAR replaces the steady drip of your TV's built-in speakers with deep booms, crystal-clear whispers, and huge waves of live concert sound. And with automatic equalization, the system self-adjusts for rich, seamless performance.

3.0 HOME CINEMA PLAYBAR's nine-speaker design plunges you into the cinematic action, with huge waves of sound that raise goose bumps while capturing every whisper and footfall. The player connects to your TV with a single cable and plays all sources, including satellite boxes and game consoles.

3.1 HOME CINEMA Pair PLAYBAR with SUB, and with the push of a button you can add spine-curling bass to your cinematic experience—wirelessly.

5.1 HOME CINEMA Add PLAY:3 speakers to your PLAYBAR and SUB for a true surround sound experience that plunges you deeply into the cinematic and gaming action on your screen. Sleek and understated with wireless control, this deeply immersive Home Cinema experience wraps you in crystal-clear, state-of-the-art SONOS sound.

NETWORKING

WIRELESS CONNECTIVITY SONOSNet 2.0, a secure AES-encrypted, peer-to-peer wireless mesh network.

SONOSNET EXTENDER Functions to extend and enhance the power of SONOSNet 2.0.

ETHERNET PORT A single Ethernet port can connect PLAYBAR to a wired home network. A second Ethernet port can be used to share wireless control.

CONTROL

Control PLAYBAR volume and mute using your existing TV, cable or universal remote. Or download the free SONOS app to control PLAYBAR from your smartphone, tablet, PC or Mac computer.

GENERAL

POWER supply AC 100-240V, 50-60 Hz

SIDE-PANEL BUTTON Volume up, volume down and mute

SIDE-PANEL LEDS Indicate PLAYBAR status

DIMENSIONS 3.35" (H) x 5.51" (D) x 35.43" (W),
85mm (H) x 140mm (D) x 900mm (W)

WEIGHT 11.9 lbs. (5.4kg)

OPERATING TEMPERATURE 32°F to 104°F (0°C to 40°C)

STORAGE TEMPERATURE 4°F to 158°F (-20°C to 70°C)

PACKAGE CONTENTS PLAYBAR, AC power cord, optical audio cable, warranty and regulatory booklet, and Quickstart Guide.

MULTIPLE ORIENTATIONS Mount PLAYBAR on the wall either above or below your television. You can also lay PLAYBAR flat on your television table.

SUPPORTED DEVICES

PLAYBAR works with all amplified and non-amplified SONOS products.

PLAYBAR connects to your TV using a single optical cable and plays all sources connected to the TV, including set top box and game consoles.

SONOS®

© 2004-2013 SONOS Inc. All rights reserved. SONOS and all other SONOS product names and slogans are trademarks or registered trademarks of SONOS, Inc. SONOS Reg. U.S. Pat. & Tm. Off. All other products and services may be trademarks or service marks of their respective owners.